

MODEL 841 COMPANION FLANGE

The Model 841 is a traditional companion flange used for transition from a flange to a threaded piping system.

Material to ASTM A536 Gr. 65-45-12 ductile iron, dimensions to ANSI B16.42 Class 150, threads to ANSI B1.20.1 NPT, black or hot-dipped galvanized (option) finish.

Pressure-Temperature Rating Companion Flanges (ANSI B16.42)

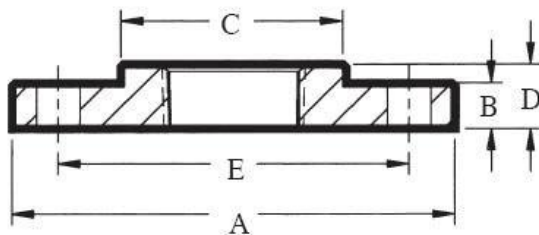
Nom. Rating	Working Pressure (W.O.G.) @150°F / @65°C	Working Pressure Saturated Steam
Class 150	250 psi / 17 Bar	150 psi (10 Bar)

*Proof test pressure: 1.5 times the working pressure, non-shock cold water.

MATERIAL SPECIFICATIONS

- Body:**
Ductile iron to ASTM A536, Gr. 65-45-12 and or ASTM A395, Gr. 65-45-15, min. tensile strength 65,000 psi (448 MPa).
- Threads:**
ANSI B1.20.1 NPT.
- Body coating:**
Black (bare metal) with thin rust-proof oil.
☐ Hot dip galvanized (Option)
☐ Electro-zinc plated (Option)

MODEL 841 COMPANION FLANGE



Full warranty terms can be found on www.shurjoint.com

Model 841 Companion Flange

Nominal Pipe Size	Pipe O.D.	Diameter of flange "A"	Thickness of flange "B"	Diameter of hub "C"	Length of hub "D"	Bolt Circle dia. "E"	Number of Bolts	Bolts Size	Weight
in mm	in mm	in mm	in mm	in mm	in mm	in mm		in	Lbs Kgs
1 25	1.315 33.4	4.25 108	0.56 14	1.94 49	0.69 18	3.12 79	4	½ x 2.25 ---	1.54 0.7
1¼ 32	1.660 42.2	4.62 117	0.62 16	2.31 59	0.81 21	3.50 89	4	½ x 2.50 ---	1.94 0.9
1½ 40	1.900 48.3	5.00 127	0.69 18	2.56 65	0.88 22	3.88 99	4	½ x 2.50 ---	2.29 1.0
2 50	2.375 60.3	6.00 152	0.75 19	3.06 78	1.00 25	4.75 121	4	¾ x 2.75 ---	4.18 1.9
2½ 65	2.875 73.0	7.00 178	0.88 22	3.56 90	1.12 28	5.50 140	4	¾ x 3.00 ---	5.83 2.6
3 80	3.500 88.9	7.50 191	0.94 24	4.25 108	1.19 30	6.00 152	4	¾ x 3.25 ---	6.60 3.0
4 100	4.500 114.3	9.00 229	0.94 24	5.31 135	1.31 33	7.50 191	8	¾ x 3.25 ---	11.75 5.3
6 150	6.625 168.3	11.00 279	1.00 25	7.56 192	1.56 40	9.50 241	8	¾ x 3.50 ---	16.50 7.5
8 200	8.625 219.1	13.50 343	1.12 28	9.69 246	1.75 44	11.75 298	8	¾ x 3.75 ---	25.98 11.8

General Notes:

- **Pressure Ratings** for fittings conform to the working pressure of the coupling used to join the system.
- **Listed and or Approved Pressures** are pressure ratings for fire protection systems, tested and approved by various approval bodies. Please always refer to the latest approval data posted on the **Shurjoint** website.
- **Field Joint Test:** For one time only the system may be tested hydrostatically at 1½ times the maximum working pressure listed (AWWA C606 5.2.3).
- **Warning:** Piping systems must always be depressurized and drained before attempting disassembly and or removal of any components.
- **The 10 Year Limited Warranty** applies to manufacturing defects only and does not cover severe service/temperature applications or wear parts.
- **Shurjoint** reserves the right to change specifications, designs and or standard without notice and without incurring any obligations.

Shurjoint product specifications in U.S. customary units and metric are approximate and are provided for reference only. For precise measurements, please contact **Shurjoint** Technical Service. **Shurjoint** reserves the right to change or modify product design, construction, specifications, or materials without prior notice and without incurring any obligations to make such changes and modifications on **Shurjoint** products previously subsequently sold.